

**T**he Information Systems Engineering Department (ISED) at Southwest Research Institute® (SwRI®) has performed a broad spectrum of independent product evaluations for a variety of industries seeking the selection of information technology and software products.

As an independent organization, SwRI is not affiliated with any government, corporate or educational institution and is, therefore, able to perform evaluations without bias or favoritism. Without conflicting interests, SwRI provides optimal recommendations and solutions to clients.

## Capabilities and Experience

Product selection processes within an organization often encounter big challenges. Typically there are multiple options needing comparison. SwRI staff can assist an organization by applying a structured product selection methodology that captures the information necessary for an organization to support and defend product decisions.

SwRI can also assist an organization by facilitating discussions with vendors, allowing the organization to remain anonymous. The evaluation information can then be used to defend decisions and achieve buy-in within the organization.

ISED staff members are technically proficient in a wide array of information technologies and have extensive experience in establishing structured methodologies for selecting commercially available products, making “build or buy” decisions, or a combination of both.

## High-level Product Evaluation Methodology

### Step 1 - Establish Evaluation Protocol

- Define evaluation scope
- Generate requirements
- Develop evaluation criteria
- Define weighting factors

### Step 2 - Identify Potential Product Candidates

- Perform market research
- Administer vendor/product surveys
- Select candidate products

### Step 3 - Define Evaluation Scenarios

- Derive use cases
- Develop demonstration scenarios
- Coordinate vendor participation
- Deliver vendor demonstration package

### Step 4 - Perform Product Demonstrations

- Conduct vendor demonstrations
- Facilitate evaluation process
- Compile scoring information

### Step 5 - Establish Evaluation Protocol

- Analyze evaluation results
- Rank candidate products
- Facilitate scoring confirmation
- Document evaluation results

### Step 6 - Present Evaluation Results

- Help prepare stakeholder presentations
- Coordinate stakeholder presentations
- Facilitate stakeholder discussions

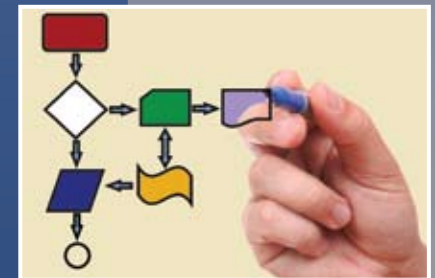
## Establish Evaluation Protocol



## Identify Potential Product Candidates



## Define Evaluation Scenarios



## Perform Product Demonstrations



## Analyze Demonstration Scenarios



## Present Evaluation Results



**The key to successful product selections is to properly align business requirements and product features. SwRI can perform independent product evaluations that facilitate this alignment.**

**Independent  
Product  
Evaluation**

The Information Systems Engineering Department at SwRI is committed to reliably producing the highest quality work through a proven systems engineering process. Our commitment to excellence is evident through our appraised attainment of Level 5 within the Software Engineering Institute's (SEI) Capability Maturity Model Integration (CMMI®). This distinction is held by a limited number of American companies and even fewer applied research and development institutions.

®CMMI is registered in the U.S. Patent and Trademark Office by Carnegie Mellon University.



*Southwest Research Institute is an independent, nonprofit, applied engineering and physical sciences research and development organization using multidisciplinary approaches to problem solving. The Institute occupies 1,200 acres in San Antonio, Texas, and provides more than 2 million square feet of laboratories, test facilities, workshops and offices for more than 3,300 employees who perform contract work for industry and government clients.*

**We welcome your inquiries.  
For additional information, please contact:**

Steven H. Rodgers  
Director  
Information Systems Engineering Department  
Automation and Data Systems Division  
(210) 522-3772 • Fax (210) 522-4228  
steven.rodgers@swri.org

H. Dwaine Smith  
Manager  
Systems Characterization and  
Validation Section  
(210) 522-2009 • Fax (210) 522-5517  
dwaine.smith@swri.org

Automation and Data Systems Division  
Southwest Research Institute  
6220 Culebra Road (78238-5166)  
P.O. Drawer 28510 (78228-0510)  
San Antonio, Texas

**[www.ised.swri.org](http://www.ised.swri.org)  
[www.swri.org](http://www.swri.org)**



*Benefiting government,  
industry and the public  
through innovative science  
and technology*

An Equal Opportunity Employer M/F/D/V  
Committed to Diversity in the Workplace

